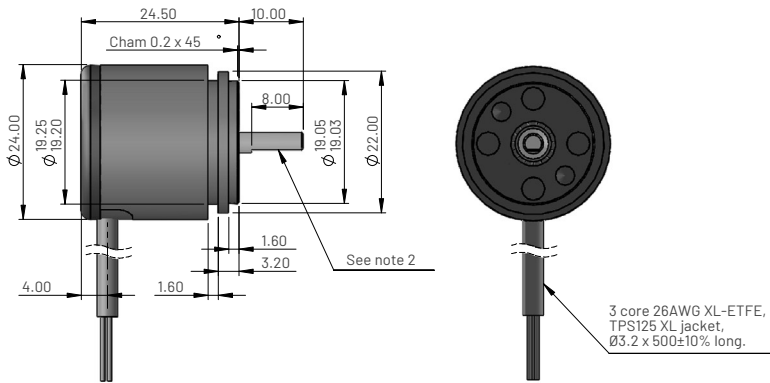


Dimensions for MHR0911 - Synchro mounting, single output



Ordering code

MHR0911 XV-XXX

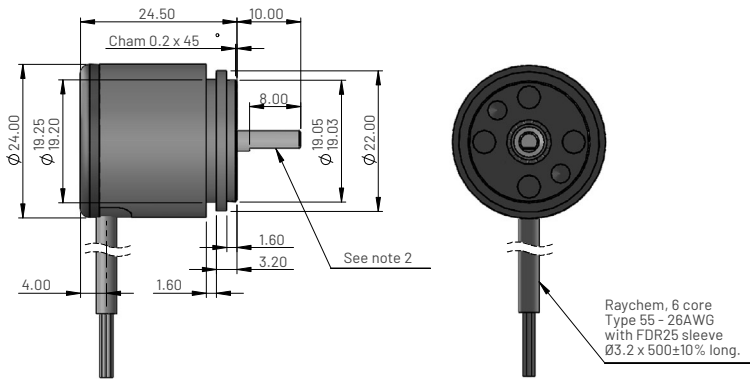
Output direction (viewed on shaft) ↙

C = Clockwise

A = Anticlockwise

Electrical angle in degrees _____

Dimensions for MHR0921 - Synchro mounting, dual output



Ordering code

MHR0921 XV-XXX

Output direction (viewed on shaft) ↙

C = Clockwise

A = Anticlockwise

D = Channel 1 output anticlockwise

Channel 2 output clockwise

Electrical angle in degrees _____

Electrical and mechanical specification for MHR0911 and MHR0921

Input specification

Supply voltage (Vs)	5.0±10% regulated	8 to 30 unregulated	VDC
Over voltage protection	Up to 50		VDC
Supply current	<15		mA
Reverse polarity protection	Up to -10		VDC
Power on settlement time	<100		ms
Input voltage rise time	0.25 minimum		V/ms

Output specification

Output type	Analogue voltage		
Output direction	Clockwise or anticlockwise (specified at time of order)		
Voltage output (Vout)	0-Vs (+5)	0 - 5.0	VDC
Line regulation	Ratiometric with Vs	<0.01% FS	
Monotonic range	Linear range (see note 5)		
Load resistance	>10K		Ohms
Output noise	<5		mV RMS

Performance specification

Measurement range	20 to 360±2 in 1° increments		°
Resolution	0.025		% of measurement range
Non-linearity (Note 4)	<±0.25		%FS
Temperature coefficient (Vout)	<±0.003	<±0.011	%FS/°C
Update rate	500 Nom		Hz
Max operating speed	600		RPM

General specification

Weight (approx.)	23		grams
Protection/sealing	Electronic housing IP68 and IP69K		
Life (shaft in bush bearing)	>500 million cycles		dependant on environment
Dither life	Contactless - no degradation due to shaft dither		
Operational temperature	-40 to +150	See de-rating graph	°C
Storage temperature	-55 to +150		°C
Materials	Case: Aluminium 6082, Top cap: GF polymer, Shaft: Stainless steel 316		

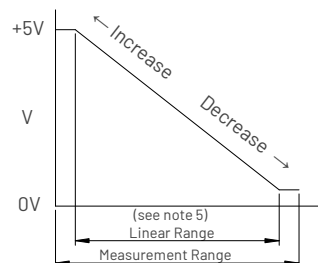
Notes

1. Incorrect wiring may cause internal damage.
2. When shaft marking is facing cable exit, instrument is mid-travel (2.5V output).
3. Do not operate between 5.5V and 8V.
4. Sensitivity and non-linearity are calculated from least squares best fit method.
5. Linear Range = Measurement range x 0.995 Nom.
6. Phasing on MHR0921-DV-XXX option is at mid-travel only.
7. Due to hall effect technology used in this device, ferrous materials and magnetic fields close to the sensor may influence output.
8. General dimension tolerance is ±0.25mm.

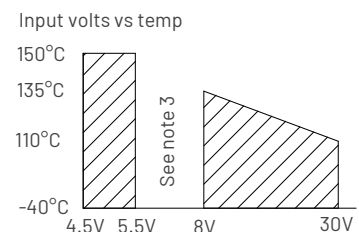
Electrical connections (see note 1)

	Wire Colour	Function
Channel 1	Red	Supply Voltage (Vs)
	White	Output Voltage (Vout)
	Black	Ground
Channel 2	Blue	Supply Voltage (Vs)
	Yellow	Output Voltage (Vout)
	Green	Ground

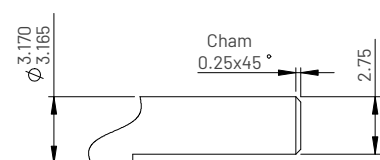
Typical output



Input voltage de-rating graph



Shaft and flat detail



Contact (Europe)
Active Sensors Ltd,
Unit 12, Wilverley Road,
Christchurch, Dorset,
BH23 3RU, UK

Contact (North America)
Active Sensors Inc,
8520 Allison Pointe Blvd, Suite 220,
Indianapolis,
IN 46250, USA