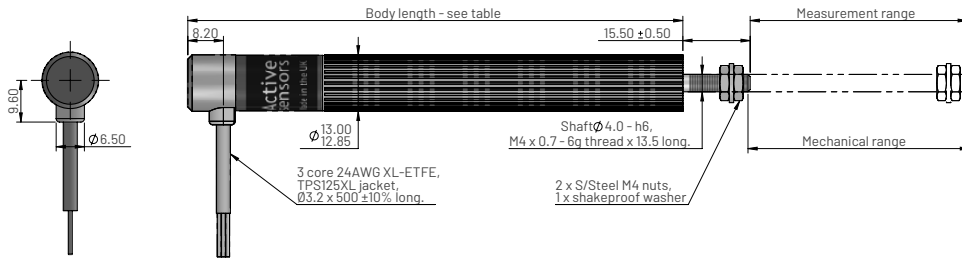


MLS1300 Series - Linear potentiometer

Dual element, Multi-contact. Ø13mm body. Ø4mm shaft.

Dimensions for MLS1321 body clamp mounting

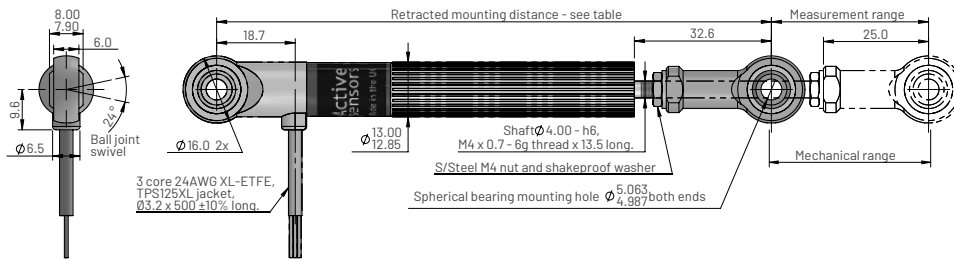


Ordering code

MLS1321-1-XXX

Measurement range in mm

Dimensions for MLS1322 5mm rod-end mounting

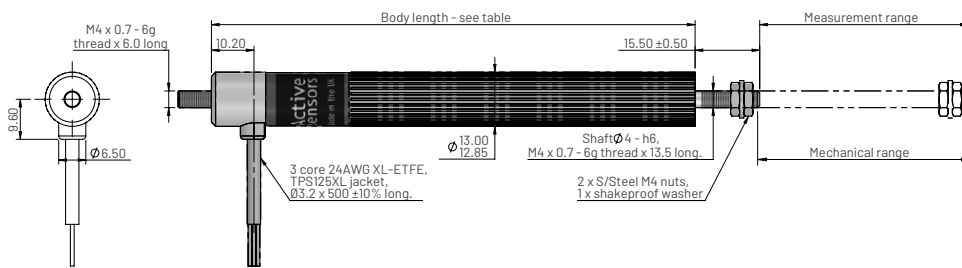


Ordering code

MLS1322-1-XXX

Measurement range in mm

Dimensions for MLS1326 threaded mounting



Ordering code

MLS1326-1-XXX

Measurement range in mm

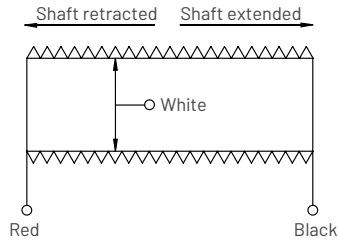
Electrical and mechanical specification for MLS1300

Parameters	Values												Units
Measurement range (±0.5mm)	025	050	075	100	125	150	175	200	225	250	300	350	mm
Body length MLS1321	89	114	139	164	189	214	239	264	289	314	364	414	mm
Body length MLS1326	91	116	141	166	191	216	241	266	291	316	366	416	mm
Retracted mounting distance MLS1322	132	157	182	207	232	257	282	307	332	357	407	457	mm
Resistance (typical)	0.5	1	1.5	2	2.5	3	3.5	4	4.5	5	6	7	Kohms
Non-linearity (Note 3)	<±0.25						<±0.15						%FS
Applied voltage	<22	<45	<65	<90	<110	<130						Vdc	
Wiper load	>500									>600	>700	Kohms	
Mechanical range (±0.5mm)	Measurement Range +2												mm
Shaft velocity	<10												m/s
Insulation resistance (at 500V DC.)	>100												Mohms
Operating temperature range	-30 to +125												°C
Sealing	IP66												
Shaft operation force (typical)	200												grams
Weight MLS1321 and MLS1326 (approx.)	52	58	65	70	77	82	88	94	100	106	112	118	grams
Weight MLS1322 (approx.)	60	66	73	78	85	90	96	102	108	114	120	126	grams
Materials	Case: Anodised aluminium 6063 T5, Shaft: Stainless steel 303												
	Rod-ends: Housing: 30% glass filled PBT, Spherical Ball: Nickel plated steel, Race: Gr nyon												

MLS1300 Series - Linear potentiometer

Dual element, Multi-contact. Ø13mm body. Ø4mm shaft.

Electrical connections (see note 1, 2)

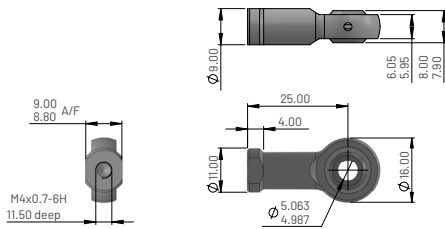


Notes

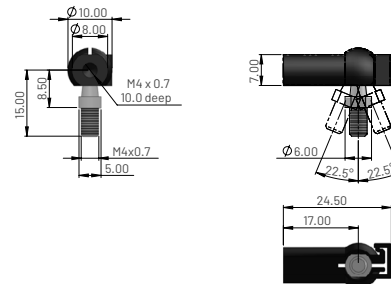
1. MLS sensors should be used as voltage dividers only.
2. Incorrect wiring may cause internal damage to the sensor.
3. General dimension tolerance is $\pm 0.25\text{mm}$.
4. Non-linearity error is calculated by least squares best fit method.

Accessories

5mm rod end



Quick release ball joints



Ordering code

PT1322-0104-19

Material	
Housing	Aluminium alloy, anodised black
Ball	Steel BS970 230M07, electroless nickel plated
Race	Gr nylon

Ordering code

JN029-003

Material	
Body	PA66, black
Ball stud	Hardened carbon
Steel	Zinc plated, clear passivate

Europe
Active Sensors Ltd,
Unit 12, Wilverley Road,
Christchurch, Dorset,
BH23 3RU, UK

North America
Active Sensors Inc,
8520 Allison Pointe Blvd, Suite 220,
Indianapolis,
IN 46250, USA