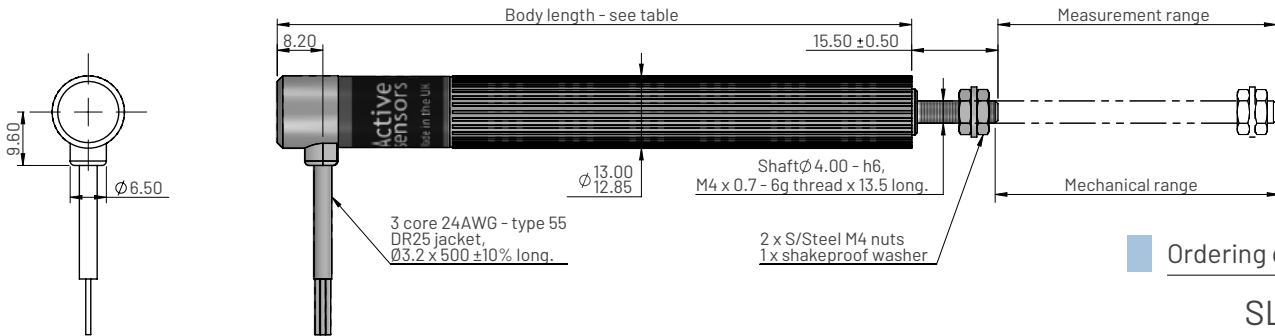


SLS1300 Series - Linear potentiometer

Single element. Ø13mm Case. Ø4mm Shaft

Dimensions for SLS1321 body clamp mounting

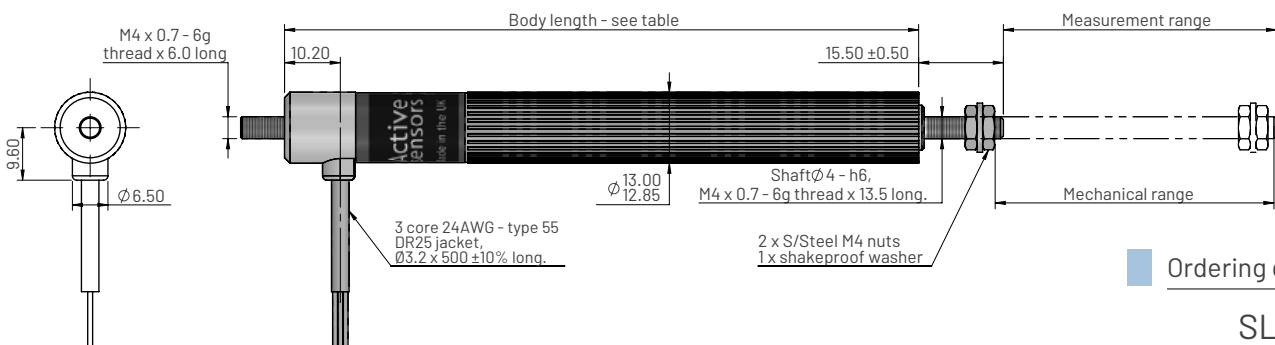


Ordering code

SLS1321-3-XXX

Measurement range in mm

Dimensions for SLS1326 threaded mounting

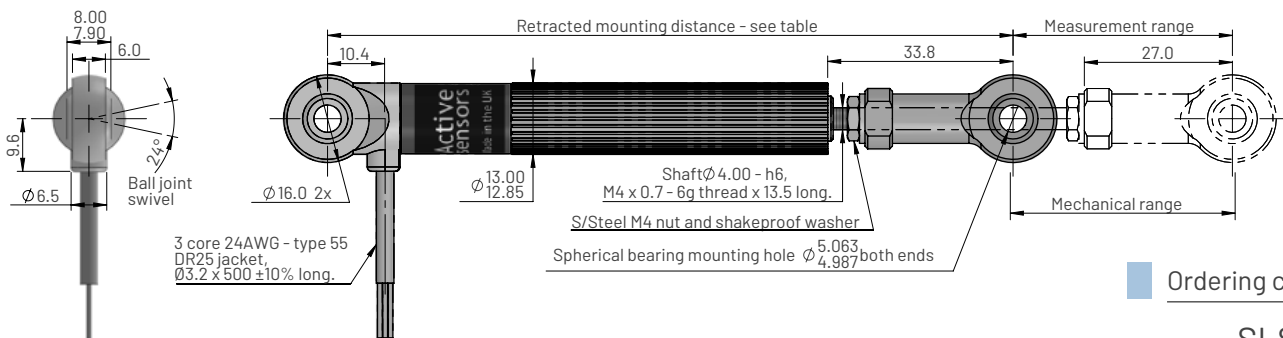


Ordering code

SLS1326-3-XXX

Measurement range in mm

Dimensions for SLS1322 5mm rod-end mounting

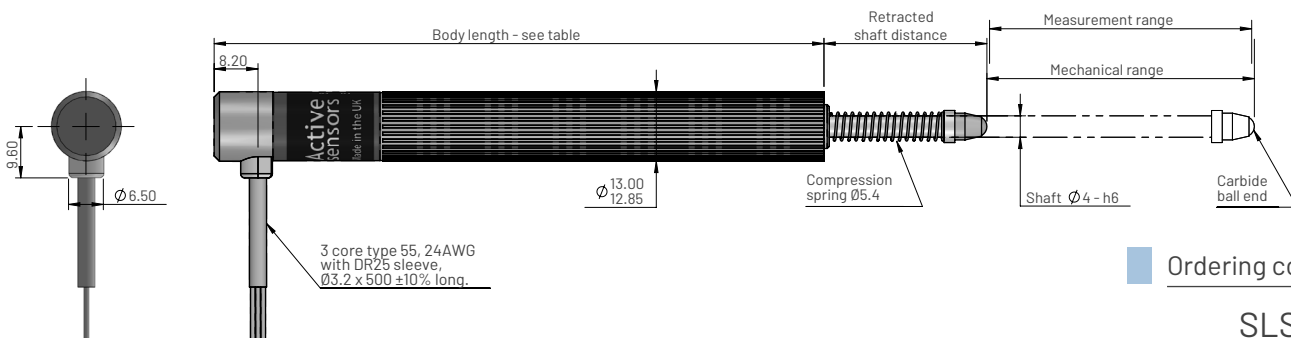


Ordering code

SLS1322-3-XXX

Measurement range in mm

Dimensions for SLS1323



Ordering code

SLS1323-3-XXX

Measurement range in mm

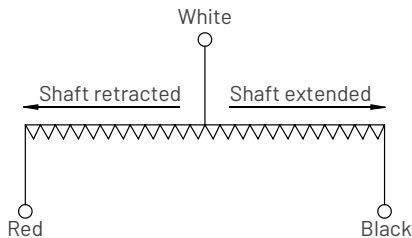
SLS1300 Series - Linear potentiometer

Single element. Ø13mm Case. Ø4mm Shaft

Electrical and mechanical specification for SLS1300

Parameters	Values												Units
Measurement range (±0.5mm)	025	050	075	100	125	150	175	200	225	250	300	350	mm
Body length SLS1321	89	114	139	164	189	214	239	264	289	314	364	414	mm
Body length SLS1326	91	116	141	166	191	216	241	266	291	316	366	416	mm
Body length SLS1323	-	114	139	164	-	214	-	-	-	-	-	-	mm
Retracted mounting distance SLS1322	125	150	175	200	225	250	275	300	325	350	400	450	mm
Retracted shaft distance (±0.5mm) SLS1323	-	30.5	45.5	50.5	-	80.5	-	-	-	-	-	-	mm
Resistance (typical)	1	2	3	4	5	6	7	8	9	10	12	14	Kohms
Non-linearity (Note 3)	<+0.25			<±0.15									%FS
Applied voltage	<22	<45	<65	<90	<110	<130						Vdc	
Wiper load	>500					>600	>700	>800	>900	>1000	>1100	>1200	Kohms
Mechanical range (±0.5mm)	Measurement Range +2												mm
Shaft velocity	<10												m/s
Insulation resistance (at 500V DC.)	>100												Mohms
Operating temperature range	-30 to +125												°C
Sealing	IP65												
Sealing SLS1323	IP50												
Shaft operation force (typical)	150												grams
Weight SLS1321 and SLS1326 (approx.)	50	56	63	68	75	80	86	92	98	104	110	116	grams
Weight SLS1322 (approx.)	58	64	71	76	83	88	94	100	106	112	118	124	grams
Materials	Sensor	Case: Anodised aluminium 6063 T5, Shaft: Stainless steel 303											
	Rod-ends	Housing: 30% glass filled PBT, Spherical Ball: Nickel plated steel, Race: Gr nylon											

Electrical connections (see note 1, 2)



Notes

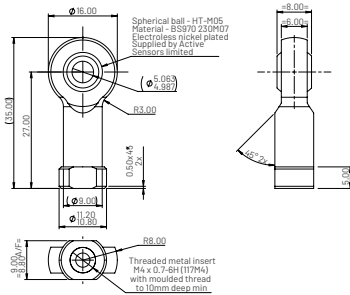
1. SLS sensors should be used as voltage dividers only.
2. Incorrect wiring may cause internal damage to the sensor.
3. Non-linearity error is calculated by least squares best fit method.
4. General dimension tolerance is ±0.25mm.

SLS1300 Series - Linear potentiometer

Single element. Ø13mm Case. Ø4mm Shaft

Accessories

5mm rod end

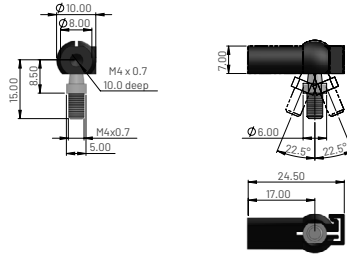


Ordering code

PT1322-3-0104

Material	
Housing	30% glass filled PBT (black)
Ball	Steel BS970 230M07, electroless nickel plated
Race	Gr nylon

Quick release ball joints



Ordering code

JN029-003

Material	
Body	PA66, black
Ball stud	Hardened carbon
Steel	Zinc plated, clear passivate